



Westwood Heath
Residents Association

Welcome!

Residents Meeting

25th September 2018

Ian Stevenson

Agenda

- **University of Warwick Expansion Plans - Hybrid Planning application**
From the UoW: Helen May (Communities), Daniel Gibbons (Estates), Mike Best (Turleys consultants)
Informing us on the Hybrid Application and answering some questions we have posed.
This will be followed by a further Q&A.
- **History Group**
An introduction to the WWH History Group by Jill Kashi
- **Traffic Group:**
 - What we (now) know about the A46 Link Road, and collecting Residents' views
 - Traffic survey data and proposed Community Speed Watch
- **Planning**
An update on the status of planning permission and Section 106 agreements
- AOB

University of Warwick

History Group

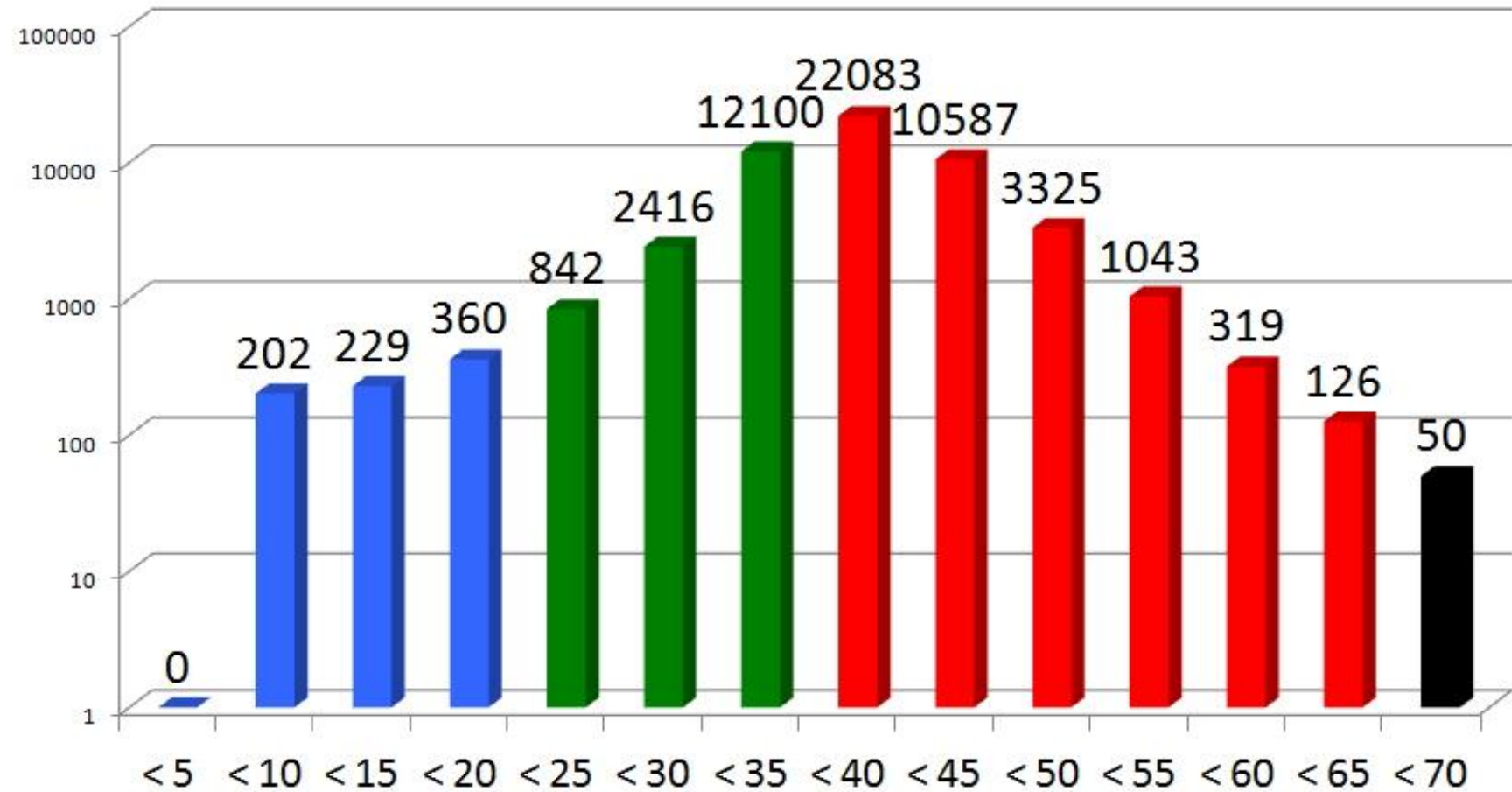
Jill Kashi

Traffic Group

Traffic Group

- Traffic Survey
- Community Speed Watch
 - Call for helpers
- A46 Link Road

Traffic Survey (2016 data)



Planning Application

- “Land to the South of Westwood Heath Road”
- Initial tranche of 127 houses (of 425) passed by WDC and CCC Planning Committees
- Subject to finalising “Section 106 Agreements”
 - Cromwell Lane junction “Improvement”
 - Cycle Lane to Kirby Corner
 - Pedestrian Crossing
- When S106 finalised, there is a six week period to challenge the final position

Aerial Photos

- Possible features exposed at the end of the dry spell
- Historic England and others for analysis
- Being considered for the “Historic Environment Record”

Links with other community bodies

- Local issues are linked in with our near neighbours
 - “KOGG – Keep our Green Belt Green”
 - An interest and campaign group of other RAs and interested parties
 - We are developing links with:
 - Burton Green, Keresley, Balsall Common Cannon Hill,
- Some issues are driven by regional and national policy
 - Campaign for the Protection of Rural England (CPRE)

Air Quality Plan – response written